

TIDESMARINE

innovative products for the marine industry



PRICES –VOLUME 11

Table of Contents

Self-Aligning Shaft Seals

SureSeal™ Shaft Seals P.2	SureSeal™ Shaft Seal Kits P.3	SureSeal™ Spare Seal Carrier Kits P.4	Strong™ Seal Spare Seal Carrier Kits P.5
			
Water Pick-Up Kit with Hose Tee Fittings P.6	Water Pick-Up Kit with Hose Barb Fittings P.6	Hose Tee Fittings P.6	SmartSeal™ Temperature Alarm System P.7
			
seriesOne™ Shaft Seals P.8	seriesOne™ Shaft Seal Kits with Single Convolution Hose P.8	seriesOne™ Shaft Seal Kits with Multi Convolution Hose P.9	SureSeal™ Replacement Nitrile Lip Seals P.10
			
Strong™ Seal Replacement Nitrile Lip Seals P. 1	Articulating Hose P.12	Hose Clamps Non-Perforated P.12	
			

Rudder Bearing Systems

Upper Rudder Bearing P.13 Standard	Upper Rudder Bearing P.13 Low Profile	Rudder Port/Bearing P.14 Tube System	Rudder Port/Bearing P.14 Type C
			

Table of Contents

Rudder Bearing Systems

Rudder Port/Bearing P.15 Type D	Rudder Port/Bearing P.15 Type E	Rudder Port/Bearing P.16 Type F	Rudder Port/Bearing P.16 Type G (without seal)
			
Rudder Port/Bearing P.17 Type H (without seal)	Rudder Port/Bearing P.17 Type I	Rudder Port/Bearing P.18 Type J	Rudder Port/Bearing P.18 Type K
			
Rudder Port/Bearing P.18 Type K with Insert	Rudder Collars P.19	Spare Rudder Seal P.19 Carrier Kits	Nitrile Lip Seals P.20
			
Nitrile Lip Seals P.21 for Type D	Zero-Draft FRP Tubes P.22		
			

Sailtrack System

Sailtrack System P.23	Sailtrack System P.23 Batten Receptacles	Sailtrack System P.24 Replacement Slides	Sailtrack System P.25 Headboard Car Assemblies
			

SureSeal™ Shaft Seals (individual)



SureSeal with
Pentagonal Cap
(molded)

or*



SureSeal with
Circular Cap
(machined)

Each SureSeal unit consists of:



Housing, Cap, Split washer,
Lip Seal & Cap Screws

***Note**

There are two styles of SureSeals which are sold. Units are either molded with a pentagonal face cap, or machined with a circular face cap.
-BOTH FUNCTION EQUALLY.

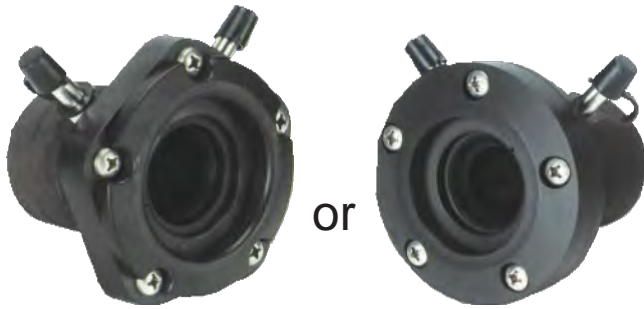
IMPERIAL SIZES

SHAFT DIAMETER	PART NUMBER	PRICE
1"	FSA-1000	278.37
1-1/8"	FSA-1125	303.56
1-1/4"	FSA-1250	303.56
1-3/8"	FSA-1375	319.61
1-1/2"	FSA-1500	456.65
1-3/4"	FSA-1750	504.89
2"	FSA-2000	587.06
2-1/4"	FSA-2250	631.94
2-1/2"	FSA-2500	748.99
2-3/4"	FSA-2750	842.12
3"	FSA-3000	944.86
3-1/4"	FSA-3250	1,054.26
3-1/2"	FSA-3500	1,389.94
3-3/4"	FSA-3750	1,544.53
4"	FSA-4000	1,699.10
4-1/4"	FSA-4250	2,180.72
4-1/2"	FSA-4500	2,662.30
5"	FSA-5000	3,008.01

METRIC SIZES

SHAFT DIAMETER	PART NUMBER	PRICE
25mm	FSA-25M	278.37
30mm	FSA-30M	303.56
35mm	FSA-35M	319.61
40mm	FSA-40M	478.74
45mm	FSA-45M	504.89
50mm	FSA-50M	587.06
55mm	FSA-55M	596.59
60mm	FSA-60M	687.47
65mm	FSA-65M	748.99
70mm	FSA-70M	842.12
75mm	FSA-75M	944.86
80mm	FSA-80M	957.27
85mm	FSA-85M	1,076.01
90mm	FSA-90M	1,389.94
95mm	FSA-95M	1,544.53
100mm	FSA-100M	1,699.10
105mm	FSA-105M	2,060.30
110mm	FSA-110M	2,421.51

SureSeal™ Shaft Seal Kits (kits include everything shown)



or



Lip Seal Protector



Articulating Hose

Hose Clamps
Non-Perforated

IMPERIAL SIZES

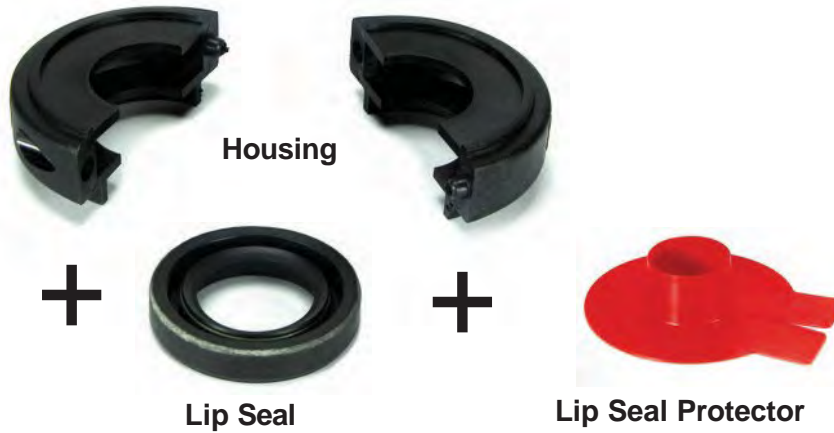
SHAFT DIAMETER	PART NUMBER	PRICE
1"	FSK-1000	359.28
1-1/8"	FSK-1125	399.44
1-1/4"	FSK-1250	405.96
1-3/8"	FSK-1375	432.97
1-1/2"	FSK-1500	587.76
1-3/4"	FSK-1750	625.06
2"	FSK-2000	713.29
2-1/4"	FSK-2250	763.73
2-1/2"	FSK-2500	880.77
2-3/4"	FSK-2750	983.60
3"	FSK-3000	1,093.92
3-1/4"	FSK-3250	1,225.48
3-1/2"	FSK-3500	1,561.18
3-3/4"	FSK-3750	1,884.34
4"	FSK-4000	2,167.87
4-1/4"	FSK-4250	2,453.92
4-1/2"	FSK-4500	2,935.54
5"	FSK-5000	3,423.56

METRIC SIZES

SHAFT DIAMETER	PART NUMBER	PRICE
25mm	FSKM-25M	359.28
30mm	FSKM-30M	399.44
35mm	FSKM-35M	432.97
40mm	FSKM-40M	587.76
45mm	FSKM-45M	625.06
50mm	FSKM-50M	713.29
55mm	FSKM-55M	738.41
60mm	FSKM-60M	819.27
65mm	FSKM-65M	880.77
70mm	FSKM-70M	983.60
75mm	FSKM-75M	1,093.92
80mm	FSKM-80M	1,129.75
85mm	FSKM-85M	1,248.47
90mm	FSKM-90M	1,561.18
95mm	FSKM-95M	1,884.34
100mm	FSKM-100M	2,167.87
105mm	FSKM-105M	2,333.37
110mm	FSKM-110M	2,694.73

SureSeal™ Spare Seal Carrier Kits

Spare Seal Carrier Kits*
(kits include everything shown)



*Note
Carrier Kits on this page
are for **SureSeals™** ONLY
which are shown above
and sold after the year 2000

IMPERIAL SIZES

SHAFT DIAMETER	PART NUMBER	PRICE
1"	KF-1000	88.72
1-1/8"	KF-1125	94.16
1-1/4"	KF-1250	102.26
1-3/8"	KF-1375	108.24
1-1/2"	K-1500	154.66
1-3/4"	K-1750	171.02
2"	KF-2000	199.50
2-1/4"	KF-2250	214.02
2-1/2"	KF-2500	251.43
2-3/4"	KF-2750	285.21
3"	K-3000	321.40
3-1/4"	K-3250	354.87
3-1/2"	K-3500	383.47
3-5/8"	K-3625	398.46
3-3/4"	K-3750	416.93
4"	K-4000	461.67
4-1/4"	K-4250	521.06
4-1/2"	K-4500	580.45
4-3/4"	K-4750	614.86
5"	K-5000	649.26

METRIC SIZES

SHAFT DIAMETER	PART NUMBER	PRICE
25mm	KFM-25MM	88.72
30mm	KFM-30MM	94.16
35mm	KF-1375	108.24
40mm	KFM-40MM	154.66
45mm	KFM-45MM	171.02
50mm	KM-50MM	199.50
55mm	KM-55MM	215.73
60mm	KM-60MM	231.99
65mm	KM-65MM	251.43
70mm	KFM-70MM	285.21
75mm	KFM-75MM	321.40
80mm	KM-80MM	347.44
85mm	KM-85MM	354.87
90mm	KFM-90MM	383.47
100mm	KM-100MM	461.67
105mm	KM-105MM	506.20
110mm	KM-110MM	550.74

*Note, Kit configurations vary depending on the size ordered:



Kits for shaft sizes up to 1-3/4" or 45mm contain one single Spare Seal Carrier with one Lip Seal



Kits for shaft Sizes 2" to 3" contain two single Spare Seal Carriers with one lip seal in each



Kits for shaft Sizes greater than 3 1/4" or 50mm contain one double Spare Seal Carrier with two Lip Seals

Strong™ Seal Spare Seal Carrier Kits



Spare Seal Carrier Kits*
(kits include everything shown)

*Note
Carrier Kits on this page are
for **Strong™ Seals ONLY**
which are shown above and
were sold prior to the year
2000



IMPERIAL SIZES

SHAFT DIAMETER	PART NUMBER	PRICE
1"	K-1000	88.72
1-1/8"	K-1125	94.16
1-1/4"	K-1250	102.26
1-3/8"	K-1375	108.24
1-1/2"	K-1500	154.66
1-3/4"	K-1750	171.02
2"	K-2000	199.50
2-1/4"	K-2250	214.02
2-1/2"	K-2500	251.43
2-3/4"	K-2750	285.21
3"	K-3000	321.40
3-1/4"	K-3250	354.87
3-1/2"	K-3500	383.47
3-5/8"	K-3625	398.46
3-3/4"	K-3750	416.93
4"	K-4000	461.67
4-1/4"	K-4250	521.06
4-1/2"	K-4500	580.45
4-3/4"	K-4750	614.86
5"	K-5000	649.26

METRIC SIZES

SHAFT DIAMETER	PART NUMBER	PRICE
25mm	KM-25MM	88.72
30mm	KM-30MM	94.16
35mm	KM-35MM	108.24
45mm	KM-45MM	171.02
50mm	KM-50MM	199.50
55mm	KM-55MM	215.73
60mm	KM-60MM	231.99
65mm	KM-65MM	251.43
70mm	KF-2750	285.21
75mm	KM-75MM	321.40
80mm	KM-80MM	347.44
85mm	KM-85MM	354.87
90mm	KM-90MM	383.47
100mm	KM-100MM	461.67
105mm	KM-105MM	506.20
110mm	KM-110MM	550.74

*Note, Kit configurations vary depending on the size ordered:



Kits for shaft sizes up to 1-3/4" or 45mm contain one single Spare Seal Carrier with one Lip Seal



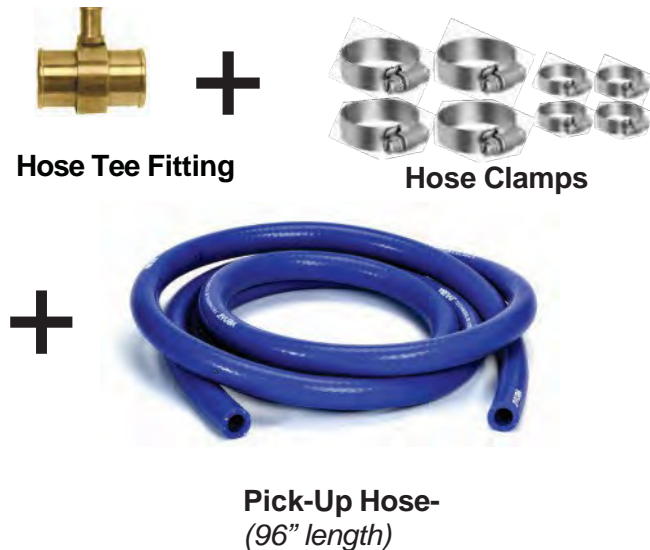
Kits for shaft Sizes 2" to 3" contain two single Spare Seal Carriers with one lip seal in each



Kits for shaft Sizes greater than 3 1/4" or 50mm contain one double Spare Seal Carrier with two Lip Seals

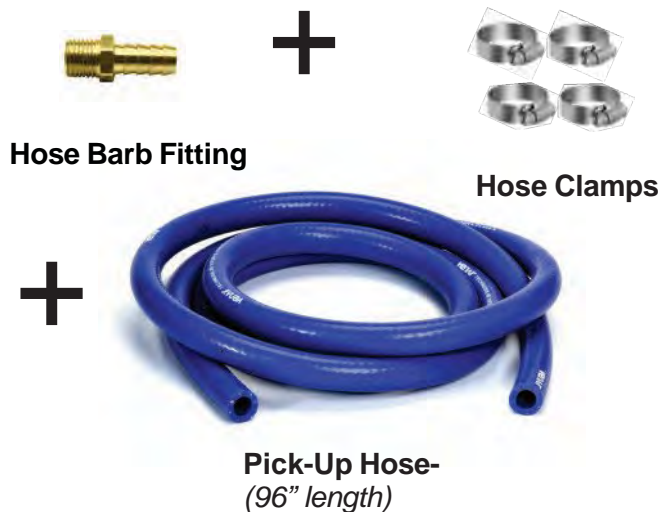
Water Pick-Up Kits and Fittings

Water Pick-Up Kits with Hose Tee fittings (kits include everything shown)



PICK-UP HOSE ID	BRANCH HOSE ID	PART NUMBER	PRICE
3/8"	3/8"	TK0375-3/8-.275	18.47
1/2"	3/8"	TK0500-3/8-.218	21.98
5/8"	3/8"	TK0625-3/8-.218	25.49
3/4"	3/8"	TK0750-3/8-.218	30.22
1"	3/8"	TK1000-3/8-.218	30.22
1-1/4"	3/8"	TK1250-3/8-.218	42.65
1-1/2"	3/8"	TK1500-3/8-.218	48.63
1-5/8"	3/8"	TK1625-3/8-.218	52.86
1-3/4"	3/8"	TK1750-3/8-.218	57.10
2"	3/8"	TK2000-3/8-.218	70.87
1"	1/2"	TK1000-1/2-.343	30.22
1-1/2"	1/2"	TK1500-1/2-.343	48.63
1-3/4"	1/2"	TK1750-1/2-.343	57.10
2"	1/2"	TK2000-1/2-.343	70.87

Water Pick-Up Kits with Hose Barb fittings (kits include everything shown)



INJECTION HOSE (SOLD BY THE FOOT)	PART NUMBER	PRICE
3/8"	INJHOSE 0375	4.27
1/2"	INJHOSE 0500	5.16

HOSE BARB SIZE	THREADED HOLE SIZE	PART NUMBER	PRICE
3/8"	1/4" NPT	IJK250-375-2000	29.44
3/8"	3/8" NPT	IJK375-375-2000	32.83
1/2"	3/8" NPT	IJK375-500-2000	32.83

Hose Tee Fittings (individual)



PICK-UP HOSE ID	BRANCH HOSE ID	PART NUMBER	PRICE
3/8"	3/8"	TH0375-3/8-.275	11.67
1/2"	3/8"	TH0500-3/8-.218	19.20
5/8"	3/8"	TH0625-3/8-.218	19.20
3/4"	3/8"	TH0750-3/8-.218	23.93
1"	3/8"	TH1000-3/8-.218	23.93
1-1/4"	3/8"	TH1250-3/8-.218	36.34
1-1/2"	3/8"	TH1500-3/8-.218	42.34
1-5/8"	3/8"	TH1625-3/8-.218	46.57
1-3/4"	3/8"	TH1750-3/8-.218	50.82
2"	3/8"	TH2000-3/8-.218	64.82
1"	1/2"	TH1000-1/2-.343	23.93
1-1/2"	1/2"	TH1500-1/2-.343	42.34
1-3/4"	1/2"	TH1750-1/2-.343	50.82
2"	1/2"	TH2000-1/2-.343	64.82

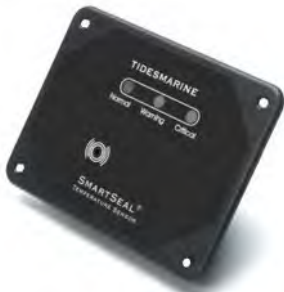
Smart Seal Temperature Monitoring System



**Single Engine Control Panel
includes sensor cable**



**Twin Engine Control Panel
includes sensor cables**



**Remote Panel
single engine**



**Remote Panel
twin engines**



Remote Warning Siren



**Extension Wire
(10M length)**



Injection Fitting

COMPONENTS

COMPONENTS	PART NUMBER	PRICE
Extension Wire	TPS-SCE	102.74
Single Engine Remote Panel Bulkhead Mount	TPS-RSBH	243.34
Twin Engine Remote Panel Bulkhead Mount	TPS-RDBH	243.34
Remote Warning Siren	SP-SS-SIREN	327.47
SS 1/4" NPT x 3/8" Hose with Sensor boss	IJH-250-375	23.19
SS 3/8" NPT x 1/2" Hose with Sensor boss	IJH-375-500	26.60

seriesOne™ Shaft Seals & Kits

seriesOne™ Shaft Seals (individual)



IMPERIAL SIZES

SHAFT DIA.	PART NUMBER	PRICE
7/8"	ONE-A-0875	\$204.70
1"	ONE-A-1000	
1-1/8"	ONE-A-1125	
1-1/4"	ONE-A-1250	

METRIC SIZES

SHAFT DIA.	PART NUMBER	PRICE
22mm	ONE-A-22M	\$204.70
25mm	ONE-A-25M	
30mm	ONE-A-30M	

seriesOne™ Shaft Seal Kit with single-convolution hose (kits include everything shown)



Shaft Seal



Lip Seal Protector



Articulating Hose
Single-convolution



Hose Clamps
Non-Perforated

IMPERIAL SIZES

SHAFT DIA.	PART NUMBER	SHAFT DIA.	PART NUMBER
7/8"	ONE-0875-1750-S	1-1/8"	ONE-1125-1750-S
7/8"	ONE-0875-2000-S	1-1/8"	ONE-1125-2000-S
7/8"	ONE-0875-2250-S	1-1/8"	ONE-1125-2250-S
7/8"	ONE-0875-2500-S	1-1/8"	ONE-1125-2500-S
7/8"	ONE-0875-2750-S	1-1/8"	ONE-1125-2750-S
7/8"	ONE-0875-3000-S	1-1/8"	ONE-1125-3000-S
1"	ONE-1000-1750-S	1-1/4"	ONE-1250-1750-S
1"	ONE-1000-2000-S	1-1/4"	ONE-1250-2000-S
1"	ONE-1000-2250-S	1-1/4"	ONE-1250-2250-S
1"	ONE-1000-2500-S	1-1/4"	ONE-1250-2500-S
1"	ONE-1000-2750-S	1-1/4"	ONE-1250-2750-S
1"	ONE-1000-3000-S	1-1/4"	ONE-1250-3000-S

METRIC SIZES

SHAFT DIA.	PART NUMBER	PRICE
25mm	ONE-25M-45M-S	\$228.96
25mm	ONE-25M-51M-S	
25mm	ONE-25M-57M-S	
25mm	ONE-25M-63M-S	
25mm	ONE-25M-70M-S	
25mm	ONE-25M-76M-S	
30mm	ONE-30M-45M-S	
30mm	ONE-30M-51M-S	
30mm	ONE-30M-57M-S	
30mm	ONE-30M-63M-S	
30mm	ONE-30M-70M-S	
30mm	ONE-30M-76M-S	

seriesOne™
Shaft Seal Kit with multi-convolution hose
(kits include everything shown)



Shaft Seal

Lip Seal Protector

Articulating Hose
Multi-convolution

Hose Clamps
Non-Perforated

IMPERIAL SIZES

SHAFT DIA.	PART NUMBER
7/8"	ONE-0875-1750-M
7/8"	ONE-0875-2000-M
7/8"	ONE-0875-2250-M
7/8"	ONE-0875-2500-M
7/8"	ONE-0875-2750-M
7/8"	ONE-0875-3000-M
1"	ONE-1000-1625-M
1"	ONE-1000-1750-M
1"	ONE-1000-2000-M
1"	ONE-1000-2250-M
1"	ONE-1000-2500-M
1"	ONE-1000-2750-M
1"	ONE-1000-3000-M

SHAFT DIA.	PART NUMBER
1-1/8"	ONE-1125-1625-M
1-1/8"	ONE-1125-1750-M
1-1/8"	ONE-1125-2000-M
1-1/8"	ONE-1125-2250-M
1-1/8"	ONE-1125-2500-M
1-1/8"	ONE-1125-2750-M
1-1/8"	ONE-1125-3000-M
1-1/4"	ONE-1250-1625-M
1-1/4"	ONE-1250-1750-M
1-1/4"	ONE-1250-2000-M
1-1/4"	ONE-1250-2250-M
1-1/4"	ONE-1250-2500-M
1-1/4"	ONE-1250-2750-M
1-1/4"	ONE-1250-3000-M

METRIC SIZES

SHAFT DIA.	PART NUMBER
25mm	ONE-25M-41M-M
25mm	ONE-25M-45M-M
25mm	ONE-25M-51M-M
25mm	ONE-25M-57M-M
25mm	ONE-25M-63M-M
25mm	ONE-25M-70M-M
25mm	ONE-25M-76M-M
30mm	ONE-30M-41M-M
30mm	ONE-30M-45M-M
30mm	ONE-30M-51M-M
30mm	ONE-30M-57M-M
30mm	ONE-30M-63M-M
30mm	ONE-30M-70M-M
30mm	ONE-30M-76M-M

PRICE

\$228.96

SureSeal™ Replacement Nitrile Lip Seals



***Note**
Lip Seals on this page are for
SureSeal™ Shaft Seal models **ONLY**-
shown on left and sold after the year
2000



SureSeal™ Replacement Nitrile Lip Seals

IMPERIAL SIZES

SHAFT DIAMETER	LIP SEAL NUMBER	PART NUMBER	PRICE
3/4"	9983	LIP SEAL 0750	72.19
7/8"	8465	LIP SEAL 0875	32.18
1"	9520	LIP SEAL F 1000	32.18
1-1/8"	9558	LIP SEAL F 1125	37.07
1-1/4"	5729	LIP SEAL F 1250	37.07
1-3/8"	3740	LIP SEAL F 1375	37.07
1-1/2"	9041	LIP SEAL 1500	44.65
1-3/4"	15557	LIP SEAL 1750	45.97
2"	9043	LIP SEAL F 2000	55.16
2-1/4"	10432	LIP SEAL F 2250	55.16
2-1/2"	10121	LIP SEAL F 2500	55.16
2-3/4"	11894	LIP SEAL F 2750	76.16
3"	9045	LIP SEAL 3000	76.16
3-1/4"	9547	LIP SEAL 3250	76.16
3-1/2"	11197	LIP SEAL 3500	97.18
3-3/4"	7146	LIP SEAL 3750	97.18
4"	7199	LIP SEAL 4000	97.18
4-1/4"	7040	LIP SEAL 4250	97.18
4-1/2"	9170	LIP SEAL 4500	126.05
5"	9629	LIP SEAL 5000	162.83

METRIC SIZES

SHAFT DIAMETER	LIP SEAL NUMBER	PART NUMBER	PRICE
25MM	6726	LIP SEAL F 25MM	59.18
30MM	10569	LIP SEAL F 30MM	37.07
35MM	3740	LIP SEAL F 1375	37.07
40MM	5536	LIP SEAL F 40MM	64.24
45MM	11499	LIP SEAL F 45MM	45.97
50MM	10015	LIP SEAL-50MM	55.16
55MM	18406	LIP SEAL-55MM	55.16
60MM	9319	LIP SEAL-60MM	55.16
65MM	6869	LIP SEAL-65MM	55.16
70MM	11894	LIP SEAL F 2750	76.16
75MM	15174	LIP SEAL F 75MM	76.16
80MM	4801	LIP SEAL-80MM	76.16
85MM	16431	LIP SEAL-85MM	93.88
90MM	19819	LIP SEAL F 90MM	97.18
95MM	7146	LIP SEAL 3750	97.18
100MM	9510	LIP SEAL-100MM	97.18
105MM	11790	LIP SEAL-105MM	122.16
110MM	16548	LIP SEAL-110MM	122.16
120MM	30026	LIP SEAL-120MM	177.39
125MM	19662	LIP SEAL-125MM	177.39

Strong™ Seal Replacement Nitrile Lip Seals

*Note
Lip Seals on this page are for
Strong™ Seal models ONLY-
shown on right and sold prior to
the year 2000



Strong™ Seal Replacement Nitrile Lip Seals

IMPERIAL SIZES

SHAFT DIAMETER	LIP SEAL NUMBER	PART NUMBER	PRICE
3/4"	9983	LIP SEAL 0750	72.19
7/8"	8465	LIP SEAL 0875	32.18
1"	9257	LIP SEAL 1000	32.18
1-1/8"	9460	LIP SEAL 1125	37.07
1-1/4"	5728	LIP SEAL 1250	37.07
1-3/8"	15099	LIP SEAL 1375	37.07
1-1/2"	9041	LIP SEAL 1500	44.65
1-3/4"	15557	LIP SEAL 1750	45.97
2"	11551	LIP SEAL 2000	55.16
2-1/4"	10418	LIP SEAL 2250	55.16
2-1/2"	8497	LIP SEAL 2500	55.16
2-3/4"	9732	LIP SEAL 2750	76.16
3"	9045	LIP SEAL 3000	76.16
3-1/4"	9547	LIP SEAL 3250	76.16
3-1/2"	11197	LIP SEAL 3500	97.18
3-3/4"	7146	LIP SEAL 3750	97.18
4"	7199	LIP SEAL 4000	97.18
4-1/4"	7040	LIP SEAL 4250	97.18
4-1/2"	9170	LIP SEAL 4500	126.05
5"	9629	LIP SEAL 5000	162.83

METRIC SIZES

SHAFT DIAMETER	LIP SEAL NUMBER	PART NUMBER	PRICE
25MM	6084	LIP SEAL-25MM	32.18
30MM	17236	LIP SEAL-30MM	37.07
35MM	15099	LIP SEAL 1375	37.07
40MM	18329	LIP SEAL-40MM	85.23
45MM	15265	LIP SEAL-45MM	45.97
50MM	10015	LIP SEAL-50MM	55.16
55MM	18406	LIP SEAL-55MM	55.16
60MM	9319	LIP SEAL-60MM	55.16
65MM	6869	LIP SEAL-65MM	55.16
70MM	9732	LIP SEAL-2750	76.16
75MM	15089	LIP SEAL-75MM	76.16
80MM	4801	LIP SEAL-80MM	76.16
85MM	16431	LIP SEAL-85MM	93.88
90MM	30019	LIP SEAL-90MM	97.18
95MM	7146	LIP SEAL 3750	97.18
100MM	9510	LIP SEAL-100MM	97.18
105MM	11790	LIP SEAL-105MM	122.16
110MM	16548	LIP SEAL-110MM	122.16
120MM	30026	LIP SEAL-120MM	177.39
125MM	19662	LIP SEAL-125MM	177.39

Hose Clamps & Articulating Hose

Hose Clamps Non-Perforated



FOR HOSE DIAMETER(S)	PART NUMBER	PRICE
3/8"	CLAMP-0375	2.85
1/2"	CLAMP-0500	2.90
1-1/2"	CLAMP-1500	5.14
1-3/4" - 2"	CLAMP-2000	5.19
2-1/8" - 2-3/8"	CLAMP-2250	7.27
2-1/2" - 2-5/8"	CLAMP-2500	7.75
2-3/4" - 3-1/8"	CLAMP-3000	8.24
3-1/4" - 3-1/2"	CLAMP-3500	8.73
3-3/4" - 4"	CLAMP-4000	8.73
4-1/8" - 4-1/4"	CLAMP-4250	9.41

FOR HOSE DIAMETER(S)	PART NUMBER	PRICE
4-1/2"	CLAMP-4500	10.09
5 - 5-1/4"	CLAMP-5000	10.73
5-1/2"	CLAMP-5500	11.85
6"	CLAMP-6000	12.26
6-1/2"	CLAMP-6500	13.33
7"	CLAMP-7000	14.22
7-1/2"	CLAMP-7500	15.69
8"	CLAMP-8000	17.13

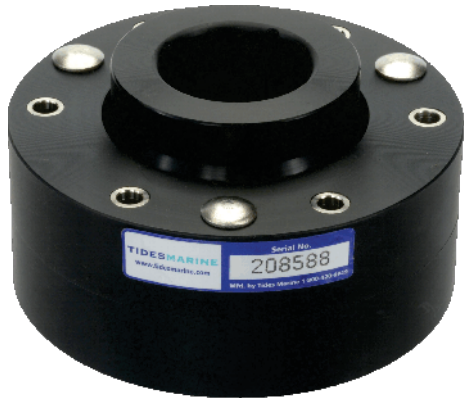
Articulating Hose



HOSE DIAMETER(S)	PART NUMBER	PRICE
1-3/4" - 2"	HS 1750-2000	87.21
2" - 2"	HS 2000-2000	72.69
2-1/4" - 2-3/8"	HS 2250-2375	79.95
2-1/2" - 2-5/8"	HS 2500-2625	82.37
2-1/2" - 2-3/4"	HS 2500-2750	84.79
3"	HS 3000-3000	87.21
3" - 3-1/2"	HS 3000-3500	92.07
3-1/4"	HS 3250-3250	92.07
3-1/2"	HS 3500-3500	96.90
3-1/2" - 3-3/4"	HS 3500-3750	96.90
3-1/2" - 4"	HS 3500-4000	96.90

HOSE DIAMETER(S)	PART NUMBER	PRICE
4" - 4-1/4"	HS 4000-4250	106.61
4" - 4-1/2"	HS 4000-4500	111.44
4" - 5"	HS 4000-5000	157.08
4-1/2"	HS 4500-4500	130.82
4-1/2" - 5"	HS 4500-5000	130.82
5" - 5-1/2"	HS 5000-5500	197.86
5" - 6"	HS 5000-6000	222.88
5-1/2" - 6-1/2"	HS 5500-6500	222.88
6-1/2" - 7"	HS 6500-7000	278.59
6-1/2" - 8"	HS 6500-8000	314.95

Upper Rudder Bearing Standard Profile



SHAFT DIAMETER	PART NUMBER	PRICE
1"	URB-STD-1000	438.11
1-1/4"	URB-STD-1250	489.77
1-3/8"	URB-STD-1375	489.77
1-1/2"	URB-STD-1500	489.77
1-3/4"	URB-STD-1750	489.77
1-7/8"	URB-STD-1875	489.77
2"	URB-STD-2000	530.71
2-1/4"	URB-STD-2250	670.48
2-1/2"	URB-STD-2500	670.48
2-3/4"	URB-STD-2750	670.48
3"	URB-STD-3000	912.03
3-1/4"	URB-STD-3250	1005.41
3-1/2"	URB-STD-3500	1,239.98
3-3/4"	URB-STD-3750	1,952.37
4"	URB-STD-4000	2,470.14
4-1/2"	URB-STD-4500	2,982.37
5"	URB-STD-5000	2,982.37
5-1/2"	URB-STD-5500	4,331.71

Upper Rudder Bearing Low Profile



SHAFT DIAMETER	PART NUMBER	PRICE
1"	URB-LP-1000	438.11
1-1/8"	URB-LP-1125	438.11
1-1/4"	URB-LP-1250	489.77
1-3/8"	URB-LP-1375	489.77
1-1/2"	URB-LP-1500	489.77
1-3/4"	URB-LP-1750	489.77
2"	URB-LP-2000	530.71
2-1/4"	URB-LP-2250	670.48
2-3/8"	URB-LP-2375	670.48
2-1/2"	URB-LP-2500	670.48
2-3/4"	URB-LP-2750	670.48
3"	URB-LP-3000	912.03
3-1/2"	URB-LP-3500	1,239.98
4"	URB-LP-4000	2,470.14
4-1/2"	URB-LP-4500	2,982.37
5"	URB-LP-5000	2,982.37

Rudder Port/Bearing Tube System & Type C

Rudder Port/Bearing Tube System

***Note**

Pricing for these bearings is contingent upon specified dimensions and required material. Please call Tides Marine, Inc., for a quote.



SHAFT DIAMETER	PART NUMBER	PRICE*
1-1/8"	TS-1125	TBD
1-1/4"	TS-1250	TBD
1-3/8"	TS-1375	TBD
1-1/2"	TS-1500	TBD
1-5/8"	TS-1625	TBD
1-3/4"	TS-1750	TBD
2"	TS-2000	TBD
2-1/4"	TS-2250	TBD
2-3/8"	TS-2375	TBD
2-1/2"	TS-2500	TBD
2-3/4"	TS-2750	TBD
3"	TS-3000	TBD
3-1/4"	TS-3250	TBD
3-1/2"	TS-3500	TBD
4"	TS-4000	TBD
5"	TS-5000	TBD

Rudder Port/Bearing Type C



SHAFT DIAMETER	PART NUMBER	PRICE
1"	RPB-C-1000-00	167.85
1-1/8"	RPB-C-1125-00	264.40
1-1/4"	RPB-C-1250-00	320.32
1-1/2"	RPB-C-1500-00	484.45
1-3/4"	RPB-C-1750-00	535.64
2"	RPB-C-2000-00	622.78
2-1/4"	RPB-C-2250-00	670.39
2-1/2"	RPB-C-2500-00	822.97
2-3/4"	RPB-C-2750-00	930.01
3"	RPB-C-3000-00	1,163.65
3-1/4"	RPB-C-3250-00	1,318.70
3-1/2"	RPB-C-3500-00	1,473.74
3-3/4"	RPB-C-3750-00	1,828.19
4"	RPB-C-4000-00	2,444.50
4-1/2"	RPB-C-4500-00	3,333.26
5"	RPB-C-5000-00	4,058.20
5-1/2"	RPB-C-5500-00	5,104.61
6"	RPB-C-6000-00	5,903.32

Rudder Port/Bearing Type D



*Note
Pricing shown is for the Type D
Bearing and seal unit only
pictured above.

*Installation tools and
accessories (mandrels,
threaded rods, fiberglass inserts
etc..) are supplied at no charge
to builders for production
installation only.*

SHAFT DIAMETER	PART NUMBER	PRICE
1"	RPB-D-1000-00	191.15
1-1/8"	RPB-D-1125-00	191.15
1-1/4"	RPB-D-1250-00	203.25
1-3/8"	RPB-D-1375-00	237.43
1-1/2"	RPB-D-1500-00	271.09
1-3/4"	RPB-D-1750-00	371.63
2"	RPB-D-2000-00	442.14
2-1/4"	RPB-D-2250-00	577.80
2-3/8"	RPB-D-2375-00	611.12
2-1/2"	RPB-D-2500-00	644.43
2-3/4"	RPB-D-2750-00	718.32
3"	RPB-D-3000-00	794.63
3-1/2"	RPB-D-3500-00	896.39
4"	RPB-D-4000-00	1,046.28
4-1/4"	RPB-D-4250-00	1,307.48
4-1/2"	RPB-D-4500-00	1,568.68

Rudder Port/Bearing Type E

*Note
Pricing for these bearings is contingent on
specified dimensions and required material.
Please call Tides Marine, Inc., for a quote.



SHAFT DIAMETER	PART NUMBER	PRICE*
1-1/4"	RPB-E-1250	TBD
1-1/2"	RPB-E-1500	TBD
1-3/4"	RPB-E-1750	TBD
2"	RPB-E-2000	TBD
2-1/4"	RPB-E-2250	TBD
2-1/2"	RPB-E-2500	TBD
2-3/4"	RPB-E-2750	TBD
3"	RPB-E-3000	TBD
3-1/4"	RPB-E-3250	TBD
3-1/2"	RPB-E-3500	TBD
4"	RPB-E-4000	TBD
4-1/4"	RPB-E-4250	TBD
4-1/2"	RPB-E-4500	TBD
5"	RPB-E-5000	TBD
5-1/2"	RPB-E-5500	TBD
6"	RPB-E-6000	TBD
6-1/2"	RPB-E-6500	TBD

Rudder Port/Bearing Type F & Type G

Rudder Port/Bearing Type F

***Note**

Pricing for these bearings is contingent on specified dimensions and required material. Please call Tides Marine, Inc., for a quote



SHAFT DIAMETER	PART NUMBER	PRICE*
1-1/2"	RPB-F-1500	TBD
1-3/4"	RPB-F-1750	TBD
2"	RPB-F-2000	TBD
2-1/2"	RPB-F-2500	TBD
2-3/4"	RPB-F-2750	TBD
3"	RPB-F-3000	TBD
3-1/4"	RPB-F-3250	TBD
3-1/2"	RPB-F-3500	TBD
4"	RPB-F-4000	TBD
4-1/2"	RPB-F-4500	TBD
4-3/4"	RPB-F-4750	TBD
5"	RPB-F-5000	TBD

Rudder Port/Bearing Type G

***Note**

Pricing for these bearings is contingent on specified dimensions and required material. Please call Tides Marine, Inc., for a quote



SHAFT DIAMETER	PART NUMBER	PRICE*
1-1/2"	RPB-G-1500	TBD
1-3/4"	RPB-G-1750	TBD
2"	RPB-G-2000	TBD
2-1/4"	RPB-G-2250	TBD
2-1/2"	RPB-G-2500	TBD
2-3/4"	RPB-G-2750	TBD
3"	RPB-G-3000	TBD
3-1/2"	RPB-G-3500	TBD
4"	RPB-G-4000	TBD
4-1/2"	RPB-G-4500	TBD
5"	RPB-G-5000	TBD

Rudder Port/Bearing Type H

*Note
Pricing for these bearings is contingent on
specified dimensions and required material.
Please call Tides Marine, Inc., for a quote



SHAFT DIAMETER	PART NUMBER	PRICE*
1-1/2"	RPB-H-1500	TBD
1-3/4"	RPB-H-1750	TBD
2"	RPB-H-2000	TBD
2-1/4"	RPB-H-2250	TBD
2-3/8"	RPB-H-2375	TBD
2-1/2"	RPB-H-2500	TBD
2-3/4"	RPB-H-2750	TBD
3"	RPB-H-3000	TBD
3-1/2"	RPB-H-3500	TBD
4"	RPB-H-4000	TBD
4-1/2"	RPB-H-4500	TBD
5"	RPB-H-5000	TBD
5-1/2"	RPB-H-5500	TBD
6"	RPB-H-6000	TBD
6-1/2"	RPB-H-6500	TBD

Rudder Port/Bearing Type I



SHAFT DIAMETER	PART NUMBER	PRICE
1-1/2"	RPB-I-1500-00	356.24
1-3/4"	RPB-I-1750-00	379.91
2"	RPB-I-2000-00	441.76
2-1/4"	RPB-I-2250-00	475.52
2-1/2"	RPB-I-2500-00	571.55
2-3/4"	RPB-I-2750-00	667.56
3"	RPB-I-3000-00	784.76
3-1/4"	RPB-I-3250-00	959.43
3-1/2"	RPB-I-3500-00	999.53
4"	RPB-I-4000-00	1,166.87
4-1/2"	RPB-I-4500-00	1,509.87
5"	RPB-I-5000-00	1,852.89

Rudder Port/Bearing Type J & Type K

Rudder Port/Bearing Type J*



*Note
No standard "-00" for this part.
Please speak with a technical
expert to identify the right fit.

SHAFT DIAMETER	PART NUMBER	PRICE
1-1/2"	RPB-J-1500	340.17
1-3/4"	RPB-J-1750	373.76
2"	RPB-J-2000	425.79
2-1/4"	RPB-J-2250	494.74
2-1/2"	RPB-J-2500	597.75
2-3/4"	RPB-J-2750	706.94
3"	RPB-J-3000	815.44
3-1/2"	RPB-J-3500	1,033.27

Rudder Port/Bearing Type K (individual)



SHAFT DIAMETER	PART NUMBER	PRICE
1-1/2"	RPB-K-1500-00	400.58
1-3/4"	RPB-K-1750-00	501.36
2"	RPB-K-2000-00	570.61
2-1/4"	RPB-K-2250-01	630.96
2-31/64"	RPB-K-2490-00	691.28
2-1/2"	RPB-K-2500-00	691.28
2-3/4"	RPB-K-2750-00	757.07
3"	RPB-K-3000-00	822.85
3-1/2"	RPB-K-3500-00	1,175.49

Rudder Port/Bearing Type K Kit



Insert

SHAFT DIAMETER	PART NUMBER	BUILDER	PRICE
2"	RPB-KT-2000-00	Hatteras	815.15
2"	RPB-KT-2000-01	Viking	815.15
2"	RPB-KT-2000-02	Davis	815.15
2-1/2"	RPB-KT-2500-00	Hatteras	987.56
2-1/2"	RPB-KT-2500-02	Viking	987.56
3"	RPB-KT-3000-00	Hatteras	1,175.49
3"	RPB-KT-3000-01	Viking	1,175.49

Rudder Collars



SHAFT DIAMETER	PART NUMBER	PRICE
1"	RUD COLLAR-1000	144.94
1-1/4"	RUD COLLAR-1250	146.96
1-3/8"	RUD COLLAR-1375	153.08
1-1/2"	RUD COLLAR-1500	157.15
1-3/4"	RUD COLLAR-1750	160.35
2"	RUD COLLAR-2000	165.69
2-1/4"	RUD COLLAR-2250	168.32
2-1/2"	RUD COLLAR-2500	171.13
2-3/4"	RUD COLLAR-2750	175.49
3"	RUD COLLAR-3000	188.38
3-1/2"	RUD COLLAR-3500	206.71
4"	RUD COLLAR-4000	429.36
4-1/2"	RUD COLLAR-4500	258.18
5"	RUD COLLAR-5000	284.09

Spare Rudder Seal Carrier Kits

(kits include everything shown)



SHAFT DIAMETER	PART NUMBER	PRICE
2"	KR-2000-00	125.27
2"	KR-2000-01	125.27
2-1/4"	KR-2250-00	134.75
2-1/2"	KR-2500-00	158.40
2-3/4"	KR-2750-00	179.68
3"	KR-3000-00	201.39
3-1/4"	KR-3250-00	223.56
3-1/2"	KR-3500-00	239.39
3-3/4"	KR-3750-00	262.65
4"	KR-4000-00	290.86
4-1/2"	KR-4500-00	365.68
5"	KR-5000-00	409.02
5-1/2"	KR-5500-00	730.94
6"	KR-6000-00	788.24
7-1/2"	KR-7500-00	1,066.82

Replacement Rudder Seals for Tube system & Types C,E,F,I,J,K Assemblies



IMPERIAL SIZES

SHAFT DIAMETER	LIP SEAL NUMBER	PART NUMBER	PRICE
1-1/2"	9041	LIP SEAL 1500	44.65
1-3/4"	15557	LIP SEAL 1750	45.97
2"	14783	LIP SEAL R 2000	55.16
2-1/4"	17307	LIP SEAL R 2250	55.16
2-1/2"	11814	LIP SEAL R 2500	55.16
2-3/4"	11023	LIP SEAL R 2750	76.16
3"	10901	LIP SEAL R 3000	76.16
3-1/2"	10914	LIP SEAL R 3500	97.18
4"	10900	LIP SEAL R 4000	97.18
4-1/2"	12269	LIP SEAL R 4500	126.05
5"	10906	LIP SEAL R 5000	162.83
5-1/2"	19402	LIP SEAL R 5500	162.83
6"	17956	LIP SEAL R 6000	162.83
6-1/2"	10267	LIP SEAL 6500	240.51

METRIC SIZES

SHAFT DIAMETER	LIP SEAL NUMBER	PART NUMBER	PRICE
25MM	6084	LIP SEAL-25MM	32.18
30MM	17236	LIP SEAL-30MM	37.07
40MM	18329	LIP SEAL-40MM	85.23
45MM	15265	LIP SEAL-45MM	45.97
50MM	10015	LIP SEAL-50MM	55.16
55MM	18406	LIP SEAL-55MM	55.16
60MM	9319	LIP SEAL-60MM	55.16
65MM	6869	LIP SEAL-65MM	55.16
70MM	11023	LIP SEAL R 2750	76.16
75MM	15089	LIP SEAL-75MM	76.16
80MM	4801	LIP SEAL-80MM	76.16
85MM	16431	LIP SEAL-85MM	93.88
90MM	30019	LIP SEAL-90MM	97.18

Replacement Rudder Seals for Type D units

***Note**
Lip Seals on this page are for the Type D Rudder Port/Bearing ONLY- shown on right. All other Tides Rudder Assemblies use Seals listed on page 20.



IMPERIAL SIZES

SHAFT DIAMETER	LIP SEAL NUMBER	PART NUMBER	PRICE
1-1/4"	LIP SEAL 1250 or LIP SEAL G 1250	5728 631	37.07
1-3/8"	LIP SEAL 1375 or LIP SEAL G 1375	15099 708	37.07
1-1/2"	LIP SEAL 1500 or LIP SEAL G 1500	9041 635	44.65
1-3/4"	LIP SEAL 1750	15557	45.97
1-7/8"	LIP SEAL 1875	8989	62.19
2"	LIP SEAL R 2000 or LIP SEAL G 2000	14783 1206	55.16
2-1/4"	LIP SEAL R 2250	17307	55.16
2-1/2"	LIP SEAL R 2500	11814	55.16
2-3/4"	LIP SEAL R 2750	11023	76.16
3"	LIP SEAL R 3000	10901	76.16
3-1/2"	LIP SEAL R 3500	10914	97.18
4"	LIP SEAL R 4000 or LIP SEAL G 4000	10900 4651	97.18
4-1/4"	LIP SEAL R 4250	13653	97.18
4-1/2"	LIP SEAL R 4500	12269	126.05

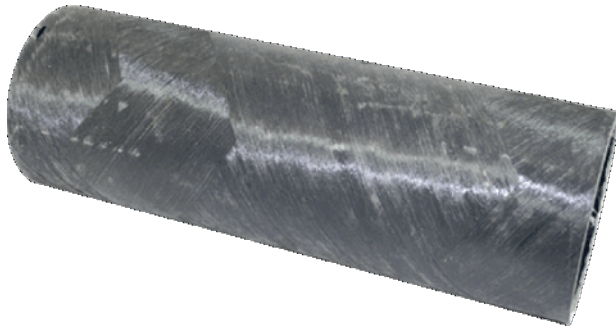
METRIC SIZES

SHAFT DIAMETER	LIP SEAL NUMBER	PART NUMBER	PRICE
25MM	6726	LIP SEAL F 25MM	59.18
30MM	10569	LIP SEAL F 30MM	37.07
35MM	15099	LIP SEAL 1375	37.07
40MM	5536	LIP SEAL F 40MM	64.24
45MM	15265	LIP SEAL 45MM	45.97
50MM	10015	LIP SEAL 50MM	94.25
60MM	9319	LIP SEAL 60MM	55.16
65MM	6869	LIP SEAL 65MM	55.16
70MM	11023	LIP SEAL R 2750	76.16
80MM	4801	LIP SEAL 80MM	76.16
85MM	16431	LIP SEAL 85MM	93.88

The Type D Rudder Assemblies have been produced using lip seals from two different manufacturers.

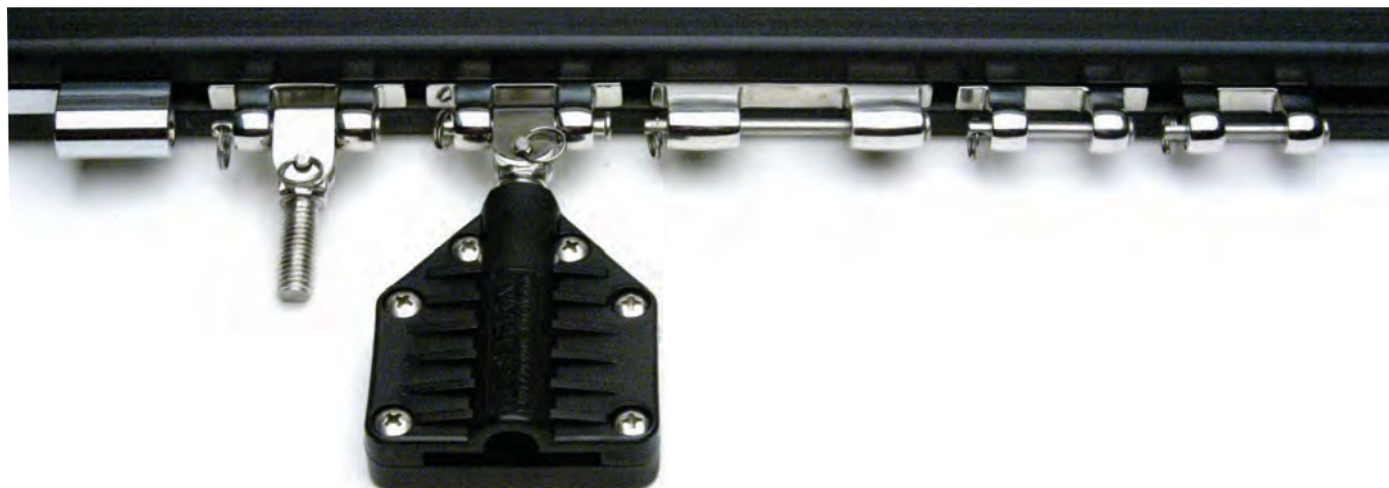
When more than one lip seal is offered for a single shaft size, please double check your part for an accurate lip seal number stamped on the flat surface of your lip seal.

Zero Draft FRP Tube



Zero Draft FRP Tube

TUBE INSIDE DIAMETER	MAXIMUM LENGTH (IN.)	PART NUMBER	PRICE
3"	48"	FRP-TUBE-3000	128.75/Ft
3-1/2"	48"	FRP-TUBE-3500	128.75/Ft
4"	48"	FRP-TUBE-4000	139.05/Ft
4-1/2"	48"	FRP-TUBE-4500	144.20/Ft
5"	48"	FRP-TUBE-5000	169.95/Ft
5-1/2"	48"	FRP-TUBE-5500	180.25/Ft
6"	48"	FRP-TUBE-6000	190.55/Ft
6-1/2"	48"	FRP-TUBE-6500	200.85/Ft
7"	20"	FRP-TUBE-7000	347.63/Ft
7-1/2"	20"	FRP-TUBE-7500	319.30/Ft
8"	20"	FRP-TUBE-8000	386.25/Ft



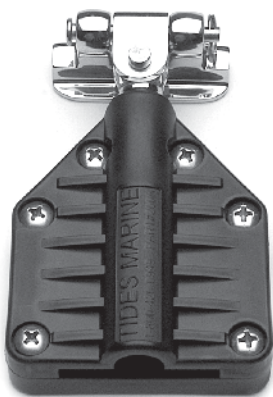
With Stainless Steel Hardware

DESCRIPTION	PRICE
Complete System	31.48/Ft
Track Only	14.76/Ft
Hardware Only	16.72/Ft

With Naval Brass Hardware

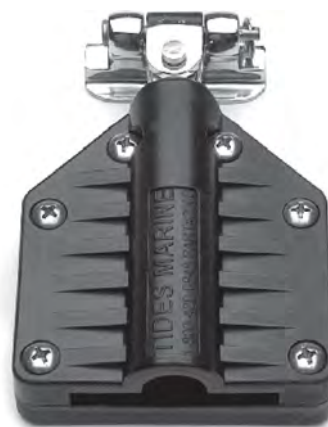
DESCRIPTION	PRICE
Complete System	35.65/Ft
Track Only	14.76/Ft
Hardware Only	20.89/Ft

Small Batten Receptacle



SH-200A-SS

Large Batten Receptacle



SH-200B-SS

DESCRIPTION	PART NUMBER	PRICE
Small Receptacle With Hardware - Stainless	SH-200A SS	96.96
Small Receptacle With Hardware – Naval Brass	SH-200A	103.49
Large Receptacle With Hardware – Stainless	SH-200B SS	109.98
Large Receptacle With Hardware – Naval Brass	SH-200B	116.46
Small Receptacle – No Hardware	SH-200A-H	38.85
Large Receptacle – No Hardware	SH-200B-H	51.75

Sailtrack System Replacement Slides



SH-600



SH-401



SH-500



SH-402



SH-400



SH-403

DESCRIPTION	PART NUMBER	PRICE
2" Slide - Universal & 10mm Stud - Stainless	SH-400 SS	60.27
2" Slide - Universal & 10mm Stud - Naval Brass	SH-400	69.07
2" Reef Slide - Stainless	SH-401 SS	30.13
2" Reef Slide - Naval Brass	SH-401	35.21
Universal With 10mm Stud - Stainless	SH-402 SS	30.13
Universal With 10mm Stud - Naval Brass	SH-402	33.92
Slide For Original Battslide - Stainless	SH-403 SS	37.71
Slide For Original Battslide - Naval Brass	SH-403	43.29
3" Headboard Slide - Stainless	SH-500 SS	37.71
3" Headboard Slide - Naval Brass	SH-500	43.29
1 3/8" Intermediate Slide - Stainless	SH-600 SS	22.62
1" 3/8" Intermediate Slide - Naval Brass	SH-600	27.63
Aquabatten 305 Backing Plate With Stainless Slide	SH-800A SS	113.05
Aquabatten 305 Backing Plate With Naval Brass Slide	SH-800A	125.58
Aquabatten 306 Backing Plate With Stainless Slide	SH-800B SS	125.61
Aquabatten 306 Backing Plate With Naval Brass Slide	SH-800B	139.03

DESCRIPTION	PART NUMBER	PRICE
<p data-bbox="121 695 581 722">Stainless Car with two 3.00" L. Stainless Slides</p> 	<p data-bbox="1198 1003 1321 1031">SH-910-SST</p>	<p data-bbox="1393 1003 1468 1031">278.49</p>
<p data-bbox="121 1339 289 1367">DESCRIPTION</p> <p data-bbox="121 1402 613 1430">Aluminum Car with two 3.00" L. Stainless Slides</p> 	<p data-bbox="1222 1654 1305 1682">SH-930</p>	<p data-bbox="1393 1654 1468 1682">306.33</p>

Limited Warranty Policy

Unless covered by specific product warranty, merchandise is guaranteed for two years or 2500 engine hours (whichever comes first) against defects in material or workmanship. Tides Marine is not liable for part failure due to improper installation or misuse. If parts appear to be defective, call Tides Marine to obtain a Warranty Return Authorization Number (WRA). Then return the parts for full credit or replacement. Any alteration or change to Tides Marine products automatically voids this warranty. For the complete limited warranty statement, visit our website at www.tidesmarine.com

Restocking Fee

All returned products will be subject to a 15% restocking fee.

TIDESMARINE
innovative products for the marine industry

3251A S.W. 13th Drive Deerfield
Beach, FL 33442 Toll Free
Phone: (800) 420-0949
General Phone: (954) 420-0949
General Fax: (954) 420-5234
Order Fax: (954) 420-0945

WWW.TIDESMARINE.COM